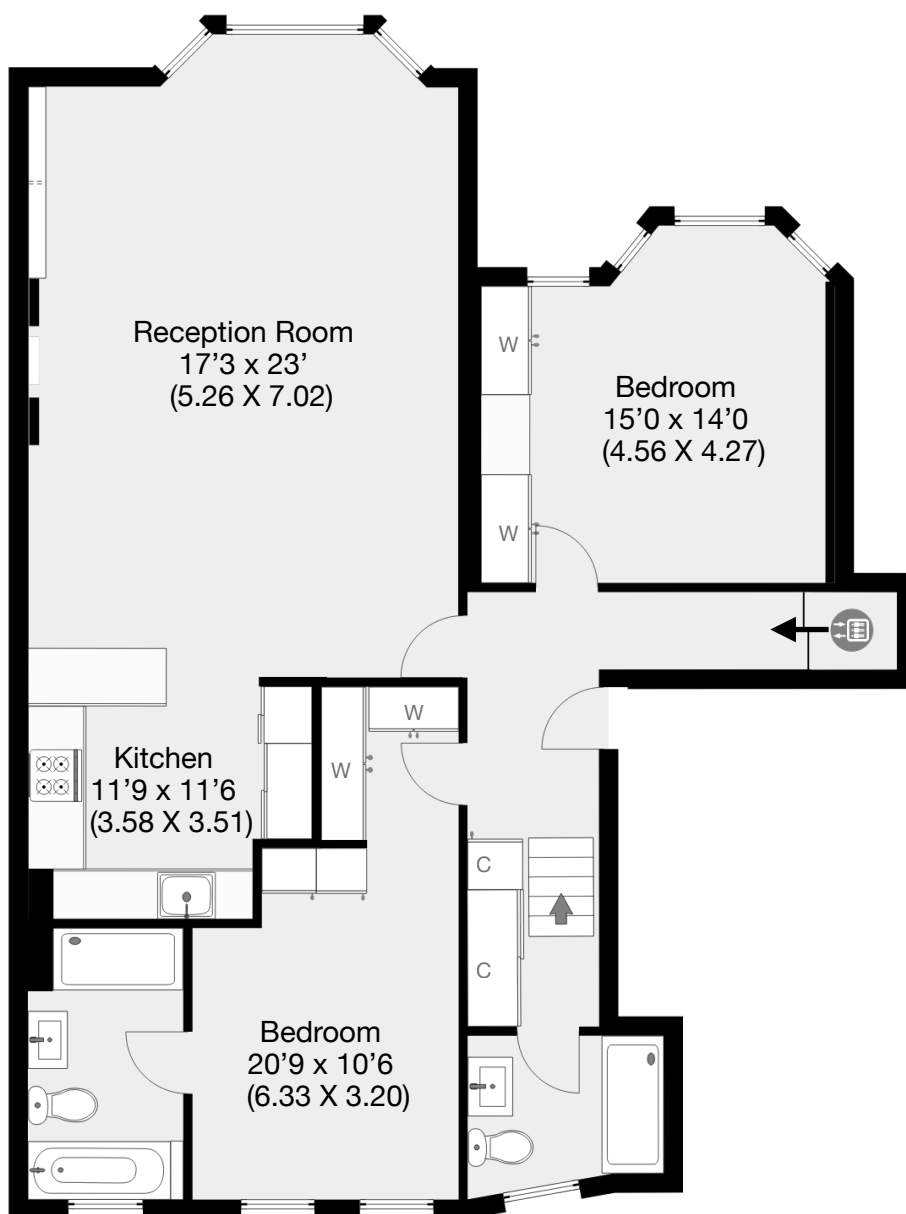




Kensington Court, London, W8

Approximate Gross Internal Area 102 sqm / 1097 sqft



Second Floor

THIS FLOOR PLAN IS PRODUCED FOR MAYFAIR PRIVATE OFFICE SUBMITTED BY **ARCHIMEDIA** web: www.archi-media.co.uk

Whilst every attempt has been made to ensure the accuracy of the floor plan contained here, measurements of doors, windows and rooms are approximate and no responsibility is taken for any error, omission or misstatement. These plans are for representation purposes only and should be used as such by any prospective buyer or lease. Specifically no guarantee is given on the gross internal floor area of the property if quoted on this plan and any figures given is initial guidance only and should be treated as such.